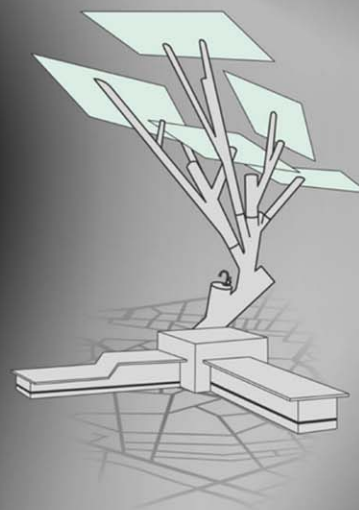


SUMMARY

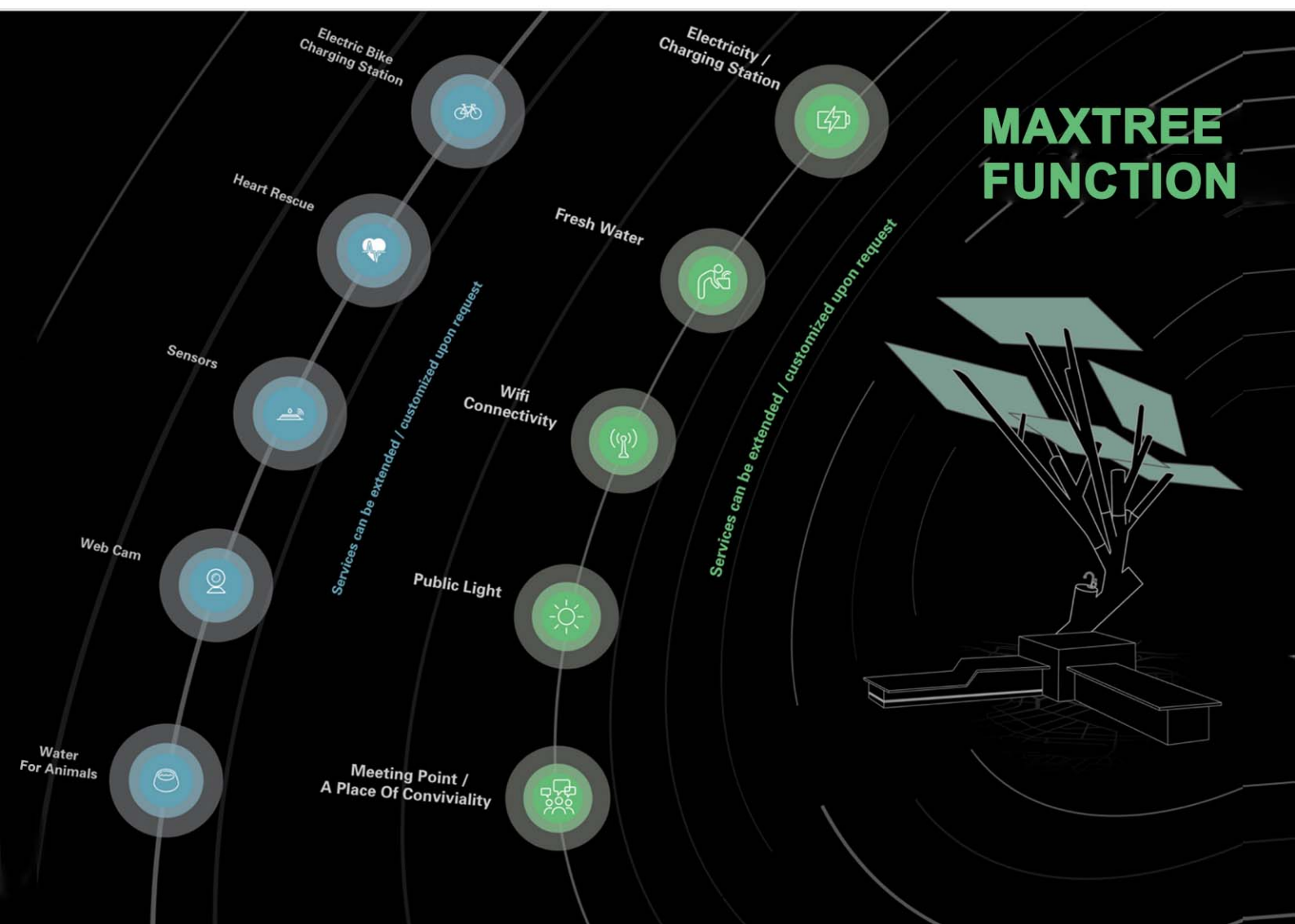
What is SMART-PINE?

SMART-PINE's creative combination of photovoltaic, energy storage, mobile charging, Wi-Fi coverage, public service, and bionic art landscapes can bring you an unparalleled user experience while being extremely practical and "a magical tree."

This service station is tree shaped and provides services to the public such as Wi-Fi connection, water, or electricity charge and much more. SMART-PINE's are used by brands and organisations that need to build an image of: corporate responsibility, environmental friendliness, technological advancement, generosity, caring about the public, and proximity. By installing an e-tree in a public space, a company places a symbolic act... that immediately distinguishes its brand in the eye of the public.

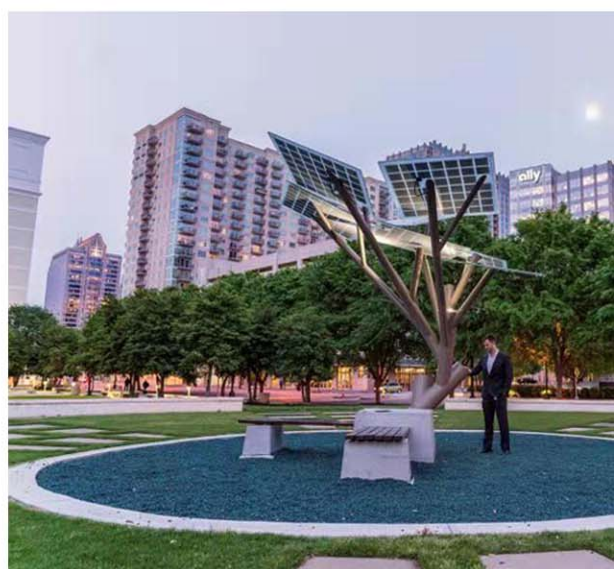
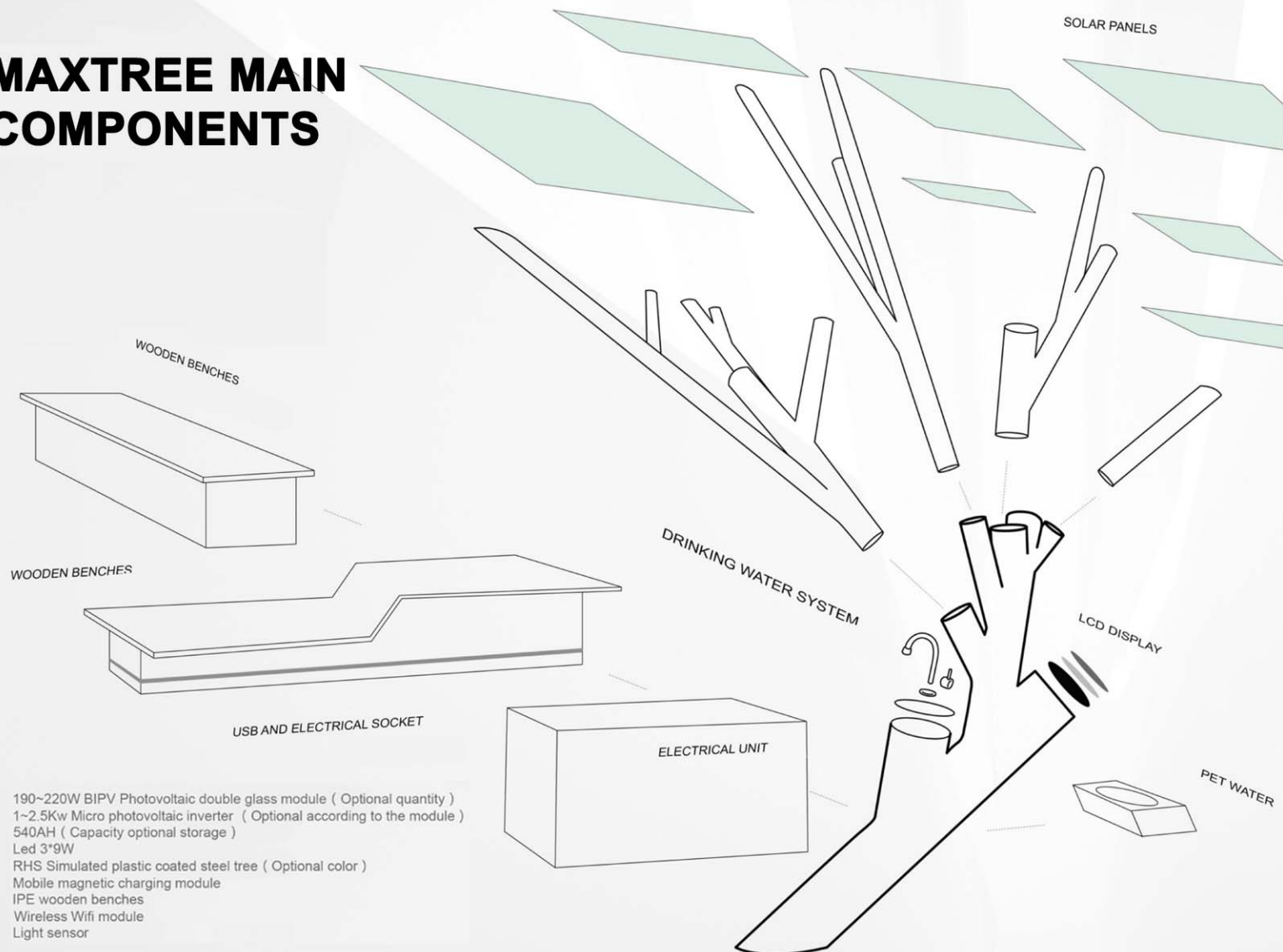


PV POWER TREE FOR ILLUMINATION SHELTER AND POWER STATION IP65



PV POWER TREE FOR ILLUMINATION SHELTER AND POWER STATION IP65

MAXTREE MAIN COMPONENTS



PV POWER TREE FOR ILLUMINATION SHELTER AND POWER STATION IP65

TECHNOLOGICAL FEATURE & PARAMETER

Specifications :

Measurement: Total height: 4.1M
Width (Include Solar panel extended size) : 4.35m*4.1m
Panel height (Minimum) : 2.4m
Floor area: 2.5m*2.5m

Weight: SmarTree weight: 1250KG
Total weight of system: 2500KG

Basic performance: Annual operation time: 365days
Continuous trouble-free performance guarantee: 100000 hours
Performance guarantee: 10 years

Electric energy: 5Kwh/days (Affected by irradiation intensity)
Storable energy: 7Kwh/days (Expandable)

Weatherability: Maximum wind speed: 170Km/h
Maximum resistance to snow load thickness: 70cm

Major components: SmarTree
Seat
Base unit

Major function: LCD display social interaction module (Networking)
6USB interface charging station (optional X-POWER charging system)
WIFI network connection station
Direct drinking water supply station
Pet feeding functional unit
Landscape light unit

Material: Tree: hot-dip galvanized profiles
Photovoltaic panels use safe tempered glass

Noise: 0 decibel

Standards and safety: Products meet the industry's highest safety and standards of use
Wind resistance standard: European standard I.S.414
Steel structure standard: I.S.1225
No radiation certification
Safe use voltage certification

Solar panel: BIPV Photovoltaic module * 7
46-piece monocrystalline battery assembly
Double tempered glass
Size: 2m2/Monolithic
Weight: 80kg/Monolithic

Smartree structure: Plastic coated steel structure (multiple colors available)

LCD Display: 7-inch touch screen
Camera module

Direct drinking water module: Direct drinking water cooling filter module
Activated carbon filter

Wi-Fi connection module: GSM/CDMA 4G wireless module
Coverage area: diameter 300m

Electrical energy storage module: 460ah high performance lithium battery module*2
Maximum load:48 hours
Minimum load:60 hours

Pet feeding module: Diameter:25cm

USB: 6 groups, output: 2~3A/group
Support 6USB synchronous charging

Night lighting module: 3LED light group (3*9W/group)
Time controller
Light detection unit

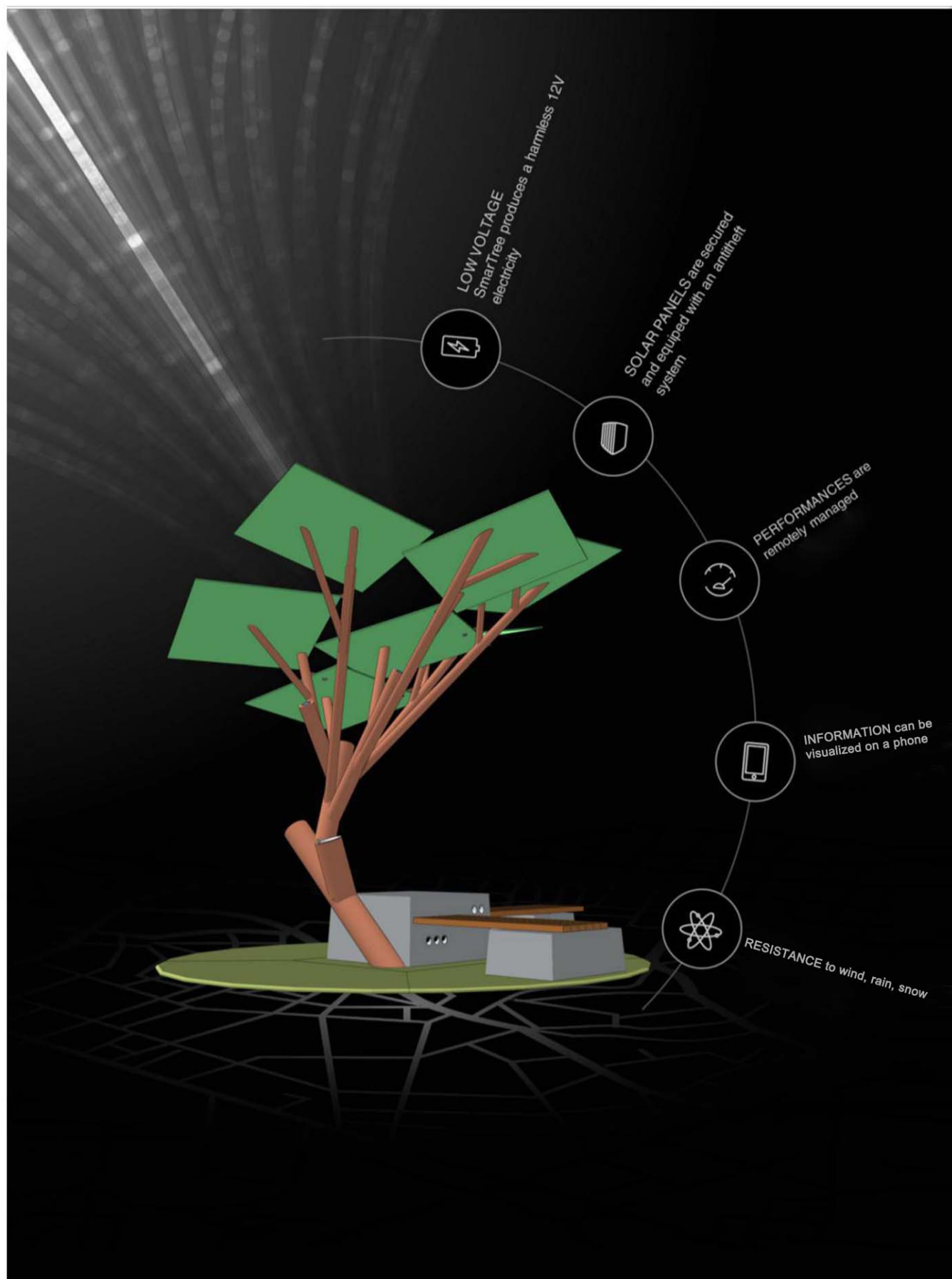
Normal type
X-POWER type

Self-diagnostic module: Remote control station
Photovoltaic battery test module
Battery storage status detection module

INSTALLATION REQUIREMENT:

Floor area: 5m*5m
Slope: Flat
Environment: Open space, able to directly receive sun exposure
Basics: Water source access, drainage system

PV POWER TREE FOR ILLUMINATION SHELTER AND POWER STATION IP65



PV POWER TREE FOR ILLUMINATION SHELTER AND POWER STATION IP65

MAXTREE FUNCTION

Product matching design
Seat, tree design style,
Material: wood optional.
(France, Italy professional design
team customized)

Smartree can be customized in
many ways to support a brand or a
concept there an external
co-working place

Community
Involvement

SMARTREE IS AN
AMAZING PLATFORM

Economic
Growth

Environmental
Action

Charging plug
X-POWER
module design

Product personality design
For example: brand exclusive

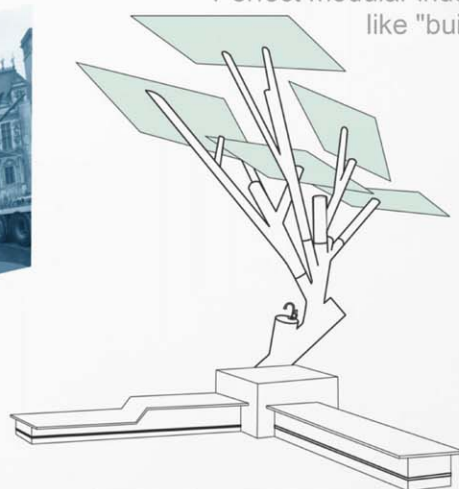


PV POWER TREE FOR ILLUMINATION SHELTER AND POWER STATION IP65

GLOBAL REFERENCES

Easy installation

Perfect modular industrial design, like "building blocks".



Friendly interface

Educational propaganda

Powerful and practical

Natural modeling

Environmentally friendly energy

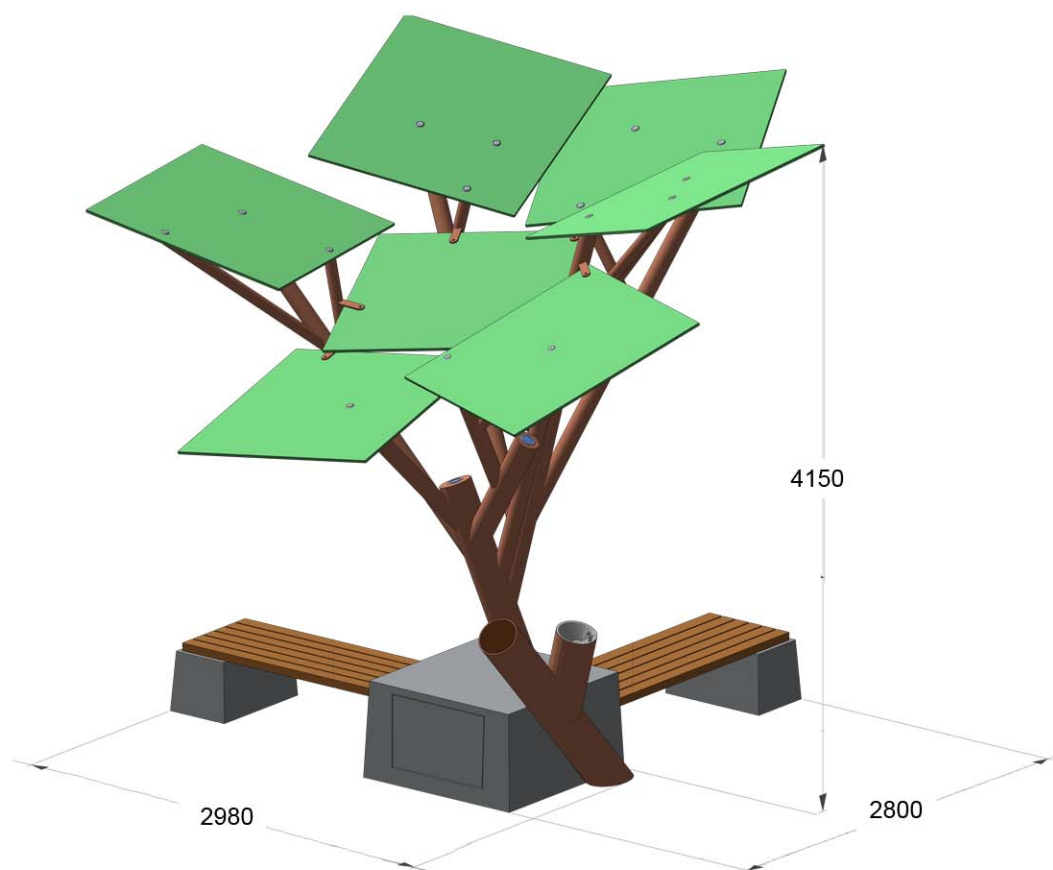
Family relationship concept

Green and safe, does not damage the surrounding environment, It also conveys a brilliant idea for the public sector.



PV POWER TREE FOR ILLUMINATION SHELTER AND POWER STATION IP65

DIMENSION(mm)

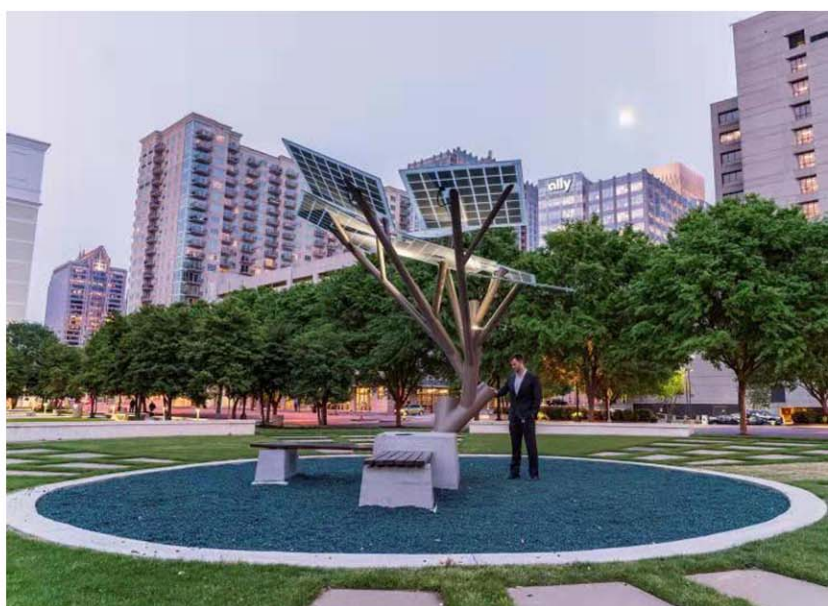


PV POWER TREE FOR ILLUMINATION SHELTER AND POWER STATION IP65

GLOBAL REFERENCES

Wide range of applications

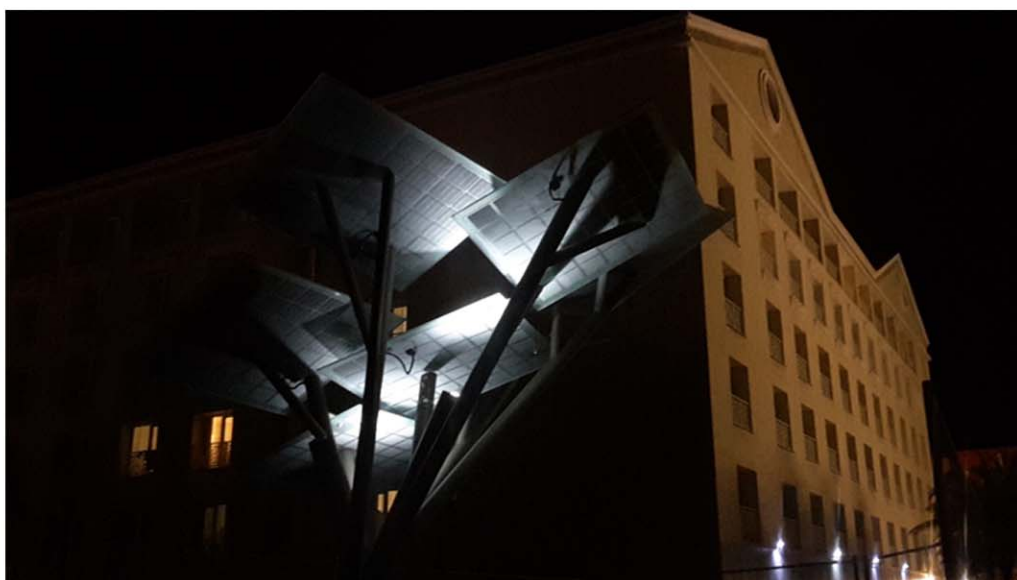
Create a SmarTree,
It means creating a unique landscape business card.



PV POWER TREE FOR ILLUMINATION SHELTER AND POWER STATION IP65



GLOBAL REFERENCES



PV POWER TREE FOR ILLUMINATION SHELTER AND POWER STATION IP65

AMERICA



PV POWER TREE FOR ILLUMINATION SHELTER AND POWER STATION IP65

FRANCE



PV POWER TREE FOR ILLUMINATION SHELTER AND POWER STATION IP65



PV POWER TREE FOR ILLUMINATION SHELTER AND POWER STATION IP65

